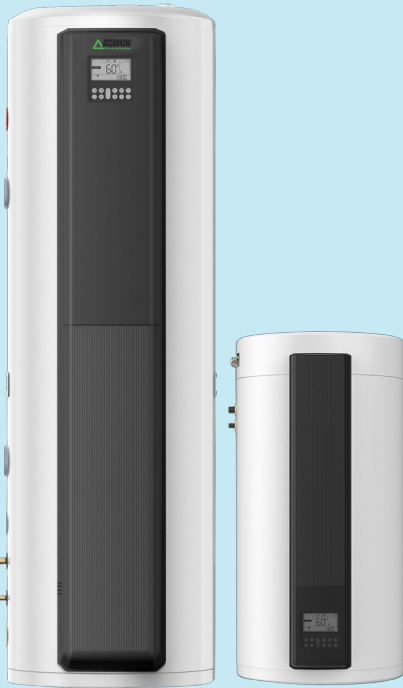


MULTIFLEX 4 DC INVERTER

Multisplit system R32 with recovery for the production of heating, air conditioning and ACS



ACS TANK BOILER



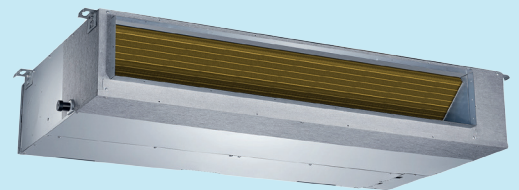
UP TO 3 SPLITS TREDI



CONSOLE DC INVERTER



CASSETTE DC INVERTER



DC INVERTER DUCTABLE

TECHNICAL FEATURES

MULTIFLEX allows you to manage air conditioning, heating and domestic hot water production, using a single external unit. Furthermore, the exclusive technology used allows you to activate the special energy recovery function during summer operation. The fields of application of MULTIFLEX range from residential systems to systems for accommodation facilities, up to commercial systems.

Innovative

The exclusive technology used to build the external units of this series enables the best efficiency through energy recovery.

Flexible

Compatible with console, ducted, four-way cassette and wall-mounted split type internal units. Up to 3 internal units can be connected simultaneously.

Efficient

Energy efficiency class A+ in domestic hot water production mode in average climate conditions with L drawing profile.

Effective

Operation guaranteed from -15° C to +42° C of external temperature, with domestic hot water up to 55° C.

Intelligent

The MULTIFLEX system can be connected to smart grid systems for the intelligent management of energy consumption, or be directly connected to a photovoltaic system.

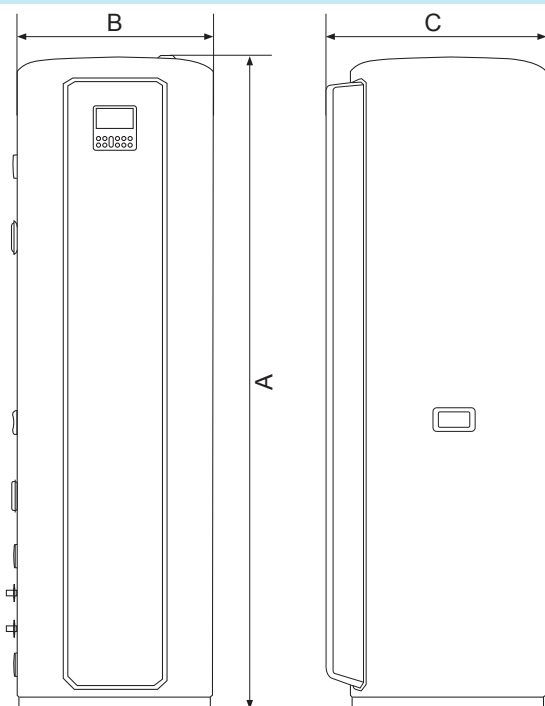
Sustainable

Thanks to the efficient use of residual heat, the system drastically reduces overall energy consumption. This translates not only into significant savings on consumption but also into a reduced environmental impact.



TANK 190 LT PER MULTIFLEX

DHW boiler



	A	B	C	
	mm	mm	mm	Kg
TANK 100 LT	1060	500	550	45
TANK 190 LT	1660	504	574	70

MODEL UNIT FOR THE PRODUCTION OF ACS

			€
TANK 100 LT FOR THE PRODUCTION OF ACS	cod. 65000012		2.120,00
TANK 190 LT FOR THE PRODUCTION OF ACS	cod. 65000011		2.320,00

TECHNICAL DATA TABLE	UM	TANK 100 LT	TANK 190 LT
Field of use	°C	da 15 a + 43	
Refrigeration connections	mm / "	6,45 + 9,52 / 1/4" + 3/8"	
DHW set point temperature (with resistance enabled)	°C	38+55 (70)	
Tank corrosion protection		Anodo di magnesio	
Construction material		Acciaio smaltato	
Net internal volume	l	100	190
Electrical power supply		230V/1/50Hz	

ACS performance according to EN 16147:21017

Load profile	I	M	L
Rated power ^{dhvt}	kW	2,6	3,9
COP ^{dhvt}	W/W	3,4	
Set point in ACS test	°C	52	
Max withdrawal in ACS = 40 °C	l	120	240
Energy class		A+	
Standby power consumption	W	50	
Max. tank pressure	bar	10	
Protection system		Magnesium sacrificial anode	
Material type		Vitrified steel	
Integration mode		2 kW electric resistance	

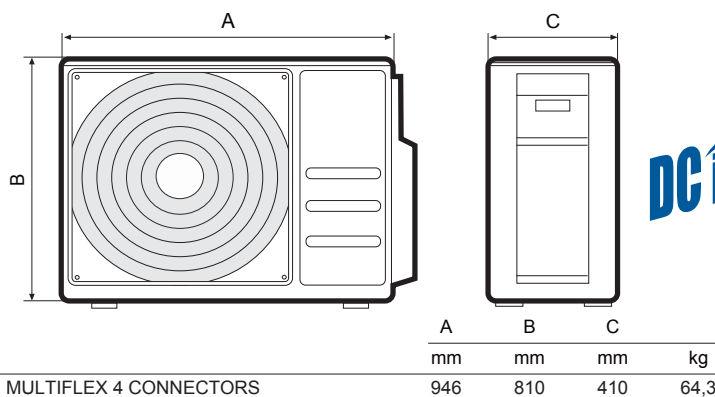
ACS production only data			
Water heating power*	kW	3,0	4,0
COP	W/W	3,9	

Electrical data			
Electrical wiring		2+Terra	
Recommended minimum electrical power section	mm ²	1,5	
Electric resistance power	kW	2	
Electric resistance current	A	9,1	
Wiring section to outdoor unit	mm ²	1,0x3+Earth	

* Air inlet 15°C, air outlet 12°C, water inlet 15°C, water outlet 45°

MULTIFLEX 4 DC INVERTER OUTDOOR UNIT

Multiflex 4-connection outdoor units



DC inverter



MODEL UNIT FOR THE PRODUCTION OF HWD

	COOLING POWER kW	THERMAL POWER	€
MULTIFLEX 3 DC INVERTER OUTDOOR UNIT cod. 65000014	5,20	7,90	2.540,00
MULTIFLEX 4 DC INVERTER OUTDOOR UNIT cod. 65000010	7,90	8,20	2.820,00

TECHNICAL DATA TABLE		UM	MULTIFLEX 3 DC INV	MULTIFLEX 4 DC INV
Cooling (standard conditions)	Capacity	W	5,20	7,90
	Power consumption	kW	1,40	2,45
	Current consumption	A	6,20	11,0
	S.E.E.R.	W/W	6,10	6,30
Heating (standard conditions)	Capacity	kW	5,20	8,20
	Power consumption	kW	1,30	2,20
	Current consumption	A	5,90	10,50
	S.C.O.P. Mid range	W/W	4,00	4,10
Maximum connectable indoor units		n.	2+1	3+1
Compressor		Tipo	Rotary Inverter	Rotary Inverter
Power supply			230/1/50Hz	230/1/50Hz
Air flow rate		m ³ /h	2100	4000
Sound power		dB(A)	65	69
Outside temperature* (cooling)		°C	-15÷50	-15÷50
Outside temperature* (heating)		°C	-15÷24	-15÷24
R32 refrigerant quantity		Kg	1,57	1,80
Liquid/gas connections			3x1/4" / 3x3/8"	3x1/4" / 2x3/8"+1x1/2"

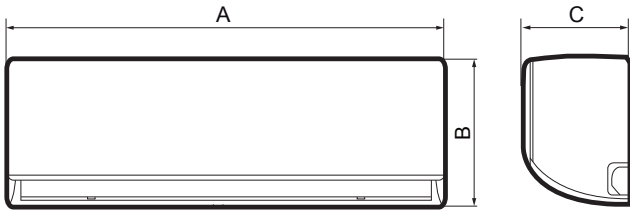
* Air inlet 15 °C, air outlet 12 °C, water inlet 15 °C, water outlet 45 °C

MULTIFLEX 4 DC INVERTER OUTDOOR UNIT CONFIGURATIONS WITH MULTISPLIT

MULTISPLIT 9 + TANK 190 LT	MULTISPLIT 9+9 + TANK 190 LT	MULTISPLIT 9+9+9 + TANK 190 LT
MULTISPLIT 12 + TANK 190 LT	MULTISPLIT 9+12 + TANK 190 LT	MULTISPLIT 9+9+12 + TANK 190 LT
MULTISPLIT 18 + TANK 190 LT	MULTISPLIT 9+18 + TANK 190 LT	MULTISPLIT 9+9+18 + TANK 190 LT
MULTISPLIT 24 + TANK 190 LT	MULTISPLIT 12+12 + TANK 190 LT	MULTISPLIT 9+12+18 + TANK 190 LT
	MULTISPLIT 12+18 + TANK 190 LT	MULTISPLIT 9+18+18 + TANK 190 LT
		MULTISPLIT 12+12+12 + TANK 190 LT

MULTISPLIT TREDI DC INVERTER - INTERNAL UNIT

R32 split system air conditioners - Wi-Fi as standard



	A	B	C	
	mm	mm	mm	kg
TREDI 9 DC INVERTER UI	722	290	187	7,3
TREDI 12 DC INVERTER UI	802	297	189	8,6
TREDI 18 DC INVERTER UI	965	319	215	10,9
TREDI 24 DC INVERTER UI	1080	335	226	13,7

TECHNICAL FEATURES

- Silent operation: 26 dB(A) at minimum speed
- Energy class A+++
- Exceptional cooling performance, excellent performance even with external temperatures down to -15 °C
- Sleep function
- The timer function allows you to program the switching on and off of the air conditioner
- The Turbo button allows you to reach the set temperature in cooling mode much faster
- Follow Mee Wifi function as standard
- Silver Ion filter as standard
- Rotary compressor with DC Inverter technology
- Up to 70% reduction in energy consumption
- Heat pump operation up to -15 °C external
- Automatic restart in the event of power surges

MODEL INTERNAL UNIT FOR HEATING & AIR CONDITIONING		COOLING POWER KW	THERMAL POWER KW	€
TREDI 9 MONO DC INVERTER U.I. R32	cod. 66440000R	2,64 (1,02÷3,19)	2,93 (0,82÷3,36)	338,00
TREDI 12 MONO DC INVERTER U.I. R32	cod. 66430000R	3,52 (0,82÷4,16)	3,81 (1,08÷4,2)	396,00
TREDI 18 DC MONO INVERTER U.I. R32	cod. 66490000R	5,28 (3,39÷5,89)	5,42 (3,10÷5,84)	528,00
TREDI 24 MONO DC INVERTER U.I. R32	cod. 66520000R	6,27 (2,11÷8,20)	6,71 (1,55÷8,20)	643,00

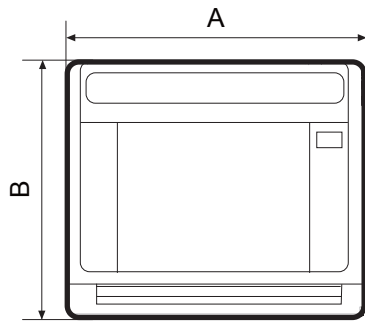
TECHNICAL DATA TABLE	UM	MULTI TREDI 9	MULTI TREDI 12	MULTI TREDI 18	MULTI TREDI 24
Cooling Power	kW	2,64 (1,02÷3,19)	3,52 (0,82÷4,16)	5,28 (3,39÷5,89)	6,27 (2,11÷8,20)
Power Input	kW	0,74	1,08	1,55	1,94
Current Input	A	4,95	5,10	6,70	10,90
Heating Power	kW	2,93 (0,82÷3,36)	3,81 (1,08÷4,2)	5,42 (3,10÷5,84)	6,71 (1,55÷8,20)
Power Input	kW	0,78	1,02	1,46	1,80
Current Input	A	3,50	3,66	6,50	9,30
Power Supply		230V/1/50Hz	230V/1/50Hz	230V/1/50Hz	230V/1/50Hz
Air Flow	m ³ /h	416/309/230	584/477/395	730/500/420	1020/830/640
Noise Level	dB(A)	39/32/26	39,5/33/25	43/33,5/28	47/41,5/30,5
Gas Connections		3/8"	3/8"	1/2"	5/8"
Liquid Connections		1/4"	1/4"	1/4"	3/8"

Cooling test conditions: int. 27 °C d.b. / 19.5 °C w.b. - ext. 35° C b
 Heating test conditions: int. 20 °C d.b. - ext. 7 °C d.b. / 6 °C w.b.



CONSOLE FOR MULTIFLEX DC INVERTER

Split system air conditioners



	A	B	C	
	mm	mm	mm	kg
CONSOLE 12 INVERTER U.I.	794	621	206	14,9

TECHNICAL FEATURES

- Equipped with remote control
- Rotary compressor with DC Inverter technology
- Quickly reaches the set temperature (about 2/3 of the time of a traditional air conditioner) with up to 70% reduction in energy consumption
- Silent operation
- Automatic restart in the event of power surges
- With Wifi provision via Smart port and clean contact for optional remote On-Off

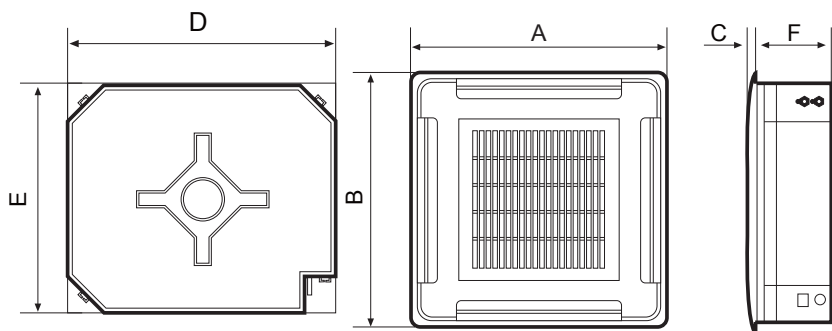
MODEL		COOLING POWER kW	THERMAL POWER kW	€
CONSOLE 12 FOR MULTIFLEX DC INVERTER U.I.	cod. 63000014	3,52	3,81	924,00

TEC. DATA TABLE	UM	CONSOLE 12
Cooling capacity	kW	3,52
Current Absorbed	A	4,52
Thermal Power	kW	3,81
Current Absorbed	A	4,43
Power supply		230V/1/50Hz
Air Flow	m ³ /h	650/580/490
Sound Level E.I.	dB (A)	37/34/27
Pipeline length	m	≤ 25
Height difference between Units	m	≤ 10
Gas Attacks		3/8"
Liquid Attacks		1/4"

*Value refers to the sum of the external unit + internal unit absorption (separate power supplies)
 Cooling test conditions: int. 27°C d.b. / 19.5°C w.b. - ext. 35°C d.b. / 24°C w.b.
 Heating test conditions: int. 20°C d.b. - ext. 7°C d.b. / 6°C w.b.

MULTIFLEX DC INVERTER CASSETTA

R32 split system air conditioners with Wi-Fi provision



	A	B	C	D	E	F	
	mm	mm	mm	mm	mm	mm	kg
CASSETTA INVERTER 12 U.I.	647	647	50	570	570	260	16,3
CASSETTA INVERTER 18 U.I.	647	647	50	570	570	260	16,3


TECHNICAL FEATURES

- Equipped with remote control and condensate drain pump
- Rotary compressor with DC Inverter technology
- Quickly reaches the set temperature (about 2/3 of the time of a traditional air conditioner)
- Reduction of up to 70% of energy consumption and silent operation
- Automatic restart in the event of power surges
- Ideal installation for false ceilings
- WI-FI provision via Smart Port

CASSETTA FOR MULTIFLEX DC INVERTER

MODEL		COOLING POWER kW	THERMAL POWER kW	€
CASSETTA 12 DC INVERTER U.I. R32	cod. 64000006	3,51 (0,85÷4,11)	3,80 (0,47÷4,31)	1.065,00
CASSETTA 18 DC INVERTER U.I. R32	cod. 64000007	5,27 (2,90÷5,59)	5,57 (2,37÷6,10)	1.194,00

ACCESSORIES

	WI-FI SMART PORT WI-FI WALL CONTROL FOR CASSETTA, CEILING/FLOOR, CASSETTE AND DUCTED	cod. 63000012	164,00
--	--	---------------	--------

TECH. DATA TABLE	UM	CASSETTA 12	CASSETTA 18
Cooling capacity	kW	3,51 (0,85÷4,11)	5,27 (2,90÷5,59)
Current Absorbed*	A	4,45	7,20
Thermal Power	kW	3,80 (0,47÷4,31)	5,23 (2,37÷6,10)
Current Absorbed*	A	4,73	6,80
Power supply		230V/1/50Hz	230V/1/50Hz
Air Flow	m ³ /h	620/510/420	720/620/500
Sound Level	dB (A)	42/38,5/31,5	44/41/31,5
Gas Attacks		3/8"	1/2"
Liquid Attacks		1/4"	1/4"

* Value refers only to the internal unit

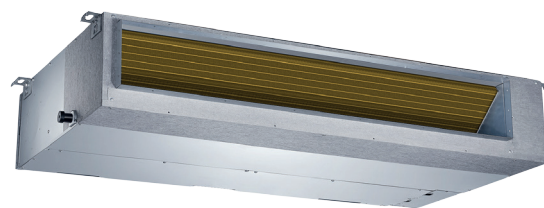
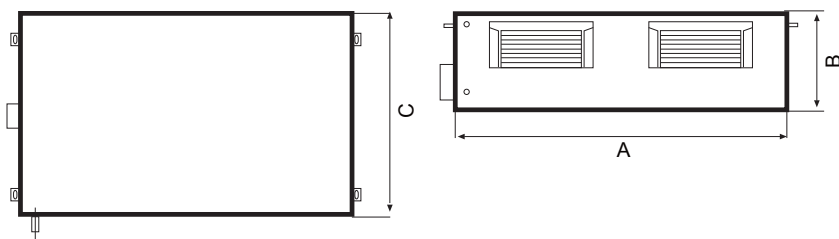
For system consumption, refer to the external unit label

Cooling test conditions: int. 27°C d.b. / 19.5°C w.b. - ext. 35°C d.b. / 24°C w.b.

Heating test conditions: int. 20°C d.b. - ext. 7°C d.b. / 6°C w.b.

DUCTABLE FOR MULTIFLEX DC INVERTER

R32 split system air conditioners with Wi-Fi provision



	A	B	C	
	mm	mm	mm	kg
DUCTABLE 9 INVERTER U.I.	700	200	506	16,6
DUCTABLE 12 INVERTER U.I.	700	200	506	16,6
DUCTABLE 18 INVERTER U.I.	700	245	750	24,4

TECHNICAL FEATURES

- Equipped with remote control and condensate drain pump up to 200 m (except version 8)
- Rotary compressor with DC Inverter technology
- Quickly reaches the set temperature about 2/3 of the time of a traditional air conditioner)
- Reduction of up to 70% of energy consumption and silent operation
- Automatic restart in the event of power surges
- Ideal installation for false ceilings
- WI-FI provision via Smart Port

DUCTABLE FOR MULTIFLEXDC INVE

DUCTABLE FOR MULTIFLEXDC INVERTER

MODEL	COOLING POWER kW	THERMAL POWER kW	€
DUCTABLE 9 DC INVERTER U.I. R32	2,63	2,93	919,00
DUCTABLE 12 DC INVERTER U.I. R32	3,51	3,81	924,00
DUCTABLE 18 DC INVERTER U.I. R32	5,27	6,00	1.156,00

TECHNICAL DATA TABLE	UM	CANAL 9	CANAL 12	CANAL 18
Cooling Power	kW	2,63	3,51	5,27
Current Absorbed*	A	1,00	1,00	0,66
Thermal Power	kW	2,93	3,81	6,00
Current Absorbed*	A	1,10	4,52	6,80
Power Supply		230V/1/50Hz	230V/1/50Hz	230V/1/50Hz
Air Flow	m ³ /h	620/540/450	660/570/470	900/780/650
Useful Static Pressure	Pa	25	25	25
Sound Level	dB (A)	54	52	53
Gas Attacks		3/8"	3/8"	1/2"
Liquid Attacks		1/4"	1/4"	1/4"

* Value refers to the internal unit only

For system consumption, refer to the external unit label

Cooling test conditions: int. 27°C d.b. / 19.5°C w.b. - ext. 35°C d.b. / 24°C w.b.

Heating test conditions: int. 20°C d.b. - ext. 7°C d.b. / 6°C w.b.