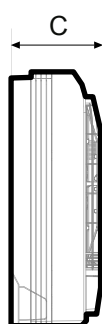
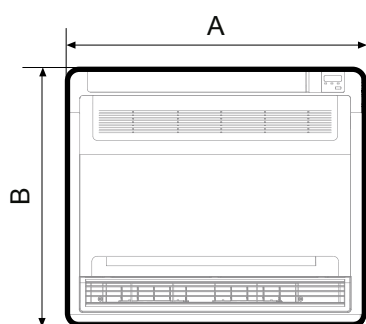


## COMMERCIAL LINE DC INVERTER CONSOLE

### Split system air conditioners



COMPATIBLE



SCOP =  
**A+++**



A	B	C	
mm	mm	mm	kg

CONSOLE 12 INVERTER U.I.	700	600	210	15
--------------------------	-----	-----	-----	----

MODEL		COOLING POWER kW	THERMAL POWER kW	€
CONSOLE 12 DC INVERTER U.I.	cod. 63000014	3,5 (0,6÷4,4)	3,8 (0,6÷4,9)	940,00
CONSOLE OUTDOOR UNIT 12 INVERTER	cod. 63000016			1.040,00

TECHNICAL DATA	UM	CONSOLE 12
Cooling power	kW	3,5 (0,6÷4,4)
Absorbed power	kW	1,0
Current consumption	A	4,7
S.E.E.R.		6,10 <b>A++</b>
Thermal power	kW	3,8 (0,6÷4,9)
Absorbed power	kW	1,0
Current consumption	A	4,6
S.C.O.P. mid-range		4,0 <b>A+</b>
S.C.O.P. warm-range		5,1 <b>A+++</b>
Supply		230V/1/50Hz
Air flow	m <sup>3</sup> /h	550/470/360
Sound level U. I.	dB (A)	47/41/35
Piping lenght	m	≤ 25
Dislevel units	m	≤ 10
Gas connections		3/8"
Liquid connections		1/4"

\*Value referred to the sum of the external unit + indoor unit absorptions (separate power supplies)

Cooling test conditions: int. 27 ° C d.b. / 19,5 ° C wb. - Ext. 35 ° C d.b. / 24 ° C wb.

Heating test conditions: int. 20 ° C db. - Ext. 7 ° C d.b. / 6 ° C wb.

# COMMERCIAL LINE - DUCTABLE ACCESSORIES DC INVERTER

## Split system air conditioners



	€
Multifunction wired remote control with follow me function, internal receiver and addressing	cod. 63000071 160,00



	€
Wi-Fi control via smartphone or pad for R32 commercial series indoor units. App suitable for Android and iOS systems with all basic functions. Senior function, weekly timer, personalized sleep curve and self-control.	cod. 63000012 150,00



	€
TWIN system kit, conversion from commercial range into dual split air conditioner	cod. 63000072 170,00



	€
FLEX PIPE IN INSULATED PVC for ducts of 10 m - Ø 200	cod. 37900001 224,00



BRAGA to Y	0 2 0 0 0 05 05, 5
------------	--------------------



DELIVERY PORT 40x20 cm with adjustable blades complete with damper	cod. 37900021 98,00
---	---------------------

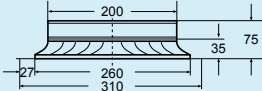


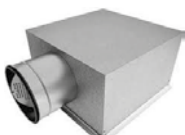
CONNECTION PLENUM Ø 200 40x20 cm between flex tube and delivery nozzle	cod. 37900019 100,00
---	----------------------

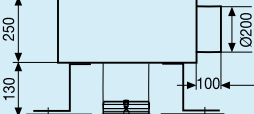


ANCHOR BRACKETS FOR OUTDOOR UNITS for mod. 9 - 12 complete with anti-vibration kit for mod. 18 - 20 - 25 - 38 - 50 - 60 complete with anti-vibration kit	cod. 37081060 78,00 cod. 37081061 114,00
--	---



CIRCULAR DIFFUSERS Ø 200 with millimetrically adjustable cones and butterfly calibration damper		cod. 37900027 100,00
---	--	----------------------



PLENUM CONNECTION Ø 200 between flexible tube and circular diffuser with adjustable cones		cod. 379000031 210,00
---	--	-----------------------