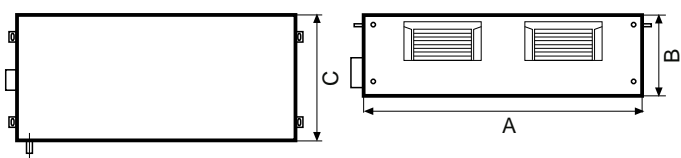


DUCTED COMMERCIAL LINE DC INVERTER Split system air conditioners



WIRELESS CONTROL, FILTER,
STANDARD CONDENSATE DRAIN PUMP

COMPATIBLE



SCOP =
A+++



	A	B	C	
	mm	mm	mm	kg
DUCT 12 INVERTER	700	200	450	18
DUCT 20 INVERTER	880	210	674	24,3
DUCT 25 INVERTER	1100	249	774	31,5
DUCT 38M INVERTER	1360	249	774	40,5

	A	B	C	
	mm	mm	mm	kg
DUCT 38T INVERTER	1360	249	774	40,5
DUCT 50 INVERTER	1200	300	874	47,6
DUCT 60 INVERTER	1200	300	874	47,6

MODEL		COOLING POWER kW	THERMAL POWER kW	€
DUCT 12 DC INVERTER U.I.	cod. 63000039	3,5 (0,5÷3,7)	3,8 (1,0÷4,0)	880,00
OUTDOOR UNIT 12 DC INVERTER U.E.	cod. 63000016			1.040,00
DUCT 20 DC INVERTER U.I.	cod. 63000041	5,3 (0,7÷6,1)	5,6 (0,8÷6,5)	1.120,00
OUTDOOR UNIT 20 DC INVERTER U.E.	cod. 63000018			1.450,00
DUCT 25 DC INVERTER U.I.	cod. 63000043	7,0 (2,2÷8,2)	7,6 (2,4÷8,4)	1.160,00
OUTDOOR UNIT 25 DC INVERTER U.E.	cod. 63000020			1.840,00
DUCT 38M FASE DC INVERTER U.I.	cod. 63000045	10,5 (2,6÷12,0)	11,1 (2,9÷13,1)	1.380,00
OUTDOOR UNIT 38M FASE DC INVERTER U.E.	cod. 63000022			3.200,00
DUCT 38T FASE DC INVERTER U.I.	cod. 63000045	10,5 (2,6÷12,0)	11,1 (2,9÷13,1)	1.380,00
OUTDOOR UNIT 38T FASE DC INVERTER U.E.	cod. 63000023			3.120,00
DUCT 50 DC INVERTER U.I.	cod. 63000048	14,0 (4,1÷16,4)	16,1 (3,7÷18,0)	1.630,00
OUTDOOR UNIT 50 DC INVERTER U.E.	cod. 63000025			3.680,00
DUCT 60 DC INVERTER U.I.	cod. 63000050	15,4 (5,8÷17,2)	18,2 (4,6÷20,5)	1.870,00
OUTDOOR UNIT 60 DC INVERTER U.E.	cod. 63000027			4.240,00

TECHNICAL DATA	UM	DUCT12	DUCT 20	DUCT 25	DUCT 38M	DUCT 38T	DUCT 50	DUCT 60
Cooling power	kW	3,5 (0,5÷3,7)	5,3 (0,7÷6,1)	7,0 (2,2÷8,2)	10,5 (2,6÷12,0)	10,5 (2,6÷12,0)	14,0 (4,1÷16,4)	15,4 (5,8÷17,2)
Absorbed power	kW	1,3*	1,6	2,1*	3,7	3,9	5,1	5,4
Current consumption	A	5,7*	1,3	9,5*	16,3	7,2	8,3	8,9
S.E.E.R.		5,60 A+	6,10 A++	6,10 A++	6,10 A++	6,10 A++	5,90 A++	5,60 A++
Thermal power	kW	3,8 (1,0÷4,0)	5,6 (0,8÷6,5)	7,6 (2,4÷8,6)	11,1 (2,9÷13,1)	11,1 (2,9÷13,1)	16,1 (3,7÷18,0)	18,2 (4,6÷20,5)
Absorbed power	kW	1,2*	1,5	2,0*	2,9	3,0	4,2	5,3
Current consumption	A	5,5*	1,3	8,9*	12,9	5,5	6,8	8,8
S.C.O.P.FMid-range		4,0 A+	4,0 A+	4,0 A+	4,0 A+	4,0 A+	4,0 A+	4,0 A+
S.C.O.P.Warm range		4,9 A++	5,1 A+++	5,2 A+++	5,1 A+++	5,1 A+++	5,1 A+++	5,1 A+++
Supply		230V/1/50Hz	230V/1/50Hz	230V/1/50Hz	230V/1/50Hz	380V/3/50Hz	380V/3/50Hz	380V/3/50Hz
Air flow	m ³ /h	600/480/300	880/650/350	1248/1054/839	1400/1150/750	1400/1150/750	2400/2040/1680	2600/2210/1820
Profit prevalence	Pa	40	70	70	80	80	100	100
Sound level U. I.	dB (A)	40/34,5/27,5	41,5/38/33	44/42/40	47/43/40	47/43/40	50,5/49,5/48	54/52/50,5
Piping length	m	≤ 20	≤ 30	≤ 50	≤ 65	≤ 65	≤ 50	≤ 50
Dislevel units	m	≤ 10	≤ 20	≤ 25	≤ 30	≤ 30	≤ 25	≤ 30
Gas connections		1/4"	1/2"	5/8"	5/8"	5/8"	5/8"	5/8"
Liquid connections		3/8"	1/4"	3/8"	3/8"	3/8"	3/8"	3/8"

*Value referred to the sum of the external unit + internal unit absorptions (separate power supplies)
Cooling test conditions: int. 27 °C d.b. / 19,5 °C wb. - Ext. 35 °C d.b. / 24 °C wb.
Heating test conditions: int. 20 °C db. - Ext. 7 °C d.b. / 6 °C wb.

COMMERCIAL LINE DUCTABLE ACCESSORIES DC INVERTER

Split system air conditioners

DELIVERY PLENUM

Complete with circular connections made of PVC complete with external insulation and elastic sheath for joining the fan unit. The use of PVC ensures the best air quality combined with extreme lightness and long life.



DELIVERY PLENUM WITH CIRCULAR CONNECTIONS

		N. COLLARS AND DIAMETER	DIMENSIONS	€
DELIVERY PLENUM 12 DC INVERTER	cod. 63000052	2 x 160 mm	537 X 152 mm	240,00
DELIVERY PLENUM 20 DC INVERTER	cod. 63000053	2 x 200 mm	706 X 136 mm	340,00
DELIVERY PLENUM 25 DC INVERTER	cod. 63000054	3 x 160 mm	926 X 175 mm	340,00
DELIVERY PLENUM 38 DC INVERTER	cod. 63000055	3 x 200 mm	1186 X 175 mm	500,00
DELIVERY PLENUM 50 DC INVERTER	cod. 63000056	4 x 200 mm	1044 X 227 mm	540,00
DELIVERY PLENUM 60 DC INVERTER	cod. 63000057	4 x 200 mm	1044 X 227 mm	540,00

DELIVERY PLENUM WITH ZONE MANAGEMENT

Complete with circular connections made of PVC, external insulation and elastic sheath for joining the fan unit. The use of PVC ensures the best air quality combined with extreme lightness and long life. Equipped with a practical thermoregulation kit complete with motorized shutters already installed, advanced power module from 2 to 6 zones, 12V power supply, all wired. The regulation system of each zone can be controlled by a room thermostat already present, or, chosen from the many available on the market and is compatible with any model. The thermostat, through the connection to the regulation board, operates the regulation damper. An automatic by-pass compensates for the back pressures generated by the closing of the control dampers. When there is no need for heating / cooling, the system switches off the air conditioning unit. On the contrary, as soon as any zone is activated by its thermostat, the system immediately activates the air conditioning unit.



DELIVERY PLENUM WITH ZONE MANAGEMENT WITH CIRCULAR CONNECTIONS

		N. COLLARS AND DIAMETER	DIMENSIONS	€
ZONE MANAGEMENT DELIVERY PLENUM 12 DC INVERTER	cod. 63000058	2 x 160 mm	537 X 152 mm	1.270,00
ZONE MANAGEMENT DELIVERY PLENUM 20 DC INVERTER	cod. 63000059	2 x 200 mm	706 X 136 mm	1.380,00
ZONE MANAGEMENT DELIVERY PLENUM 25 DC INVERTER	cod. 63000060	3 x 160 mm	926 X 175 mm	1.560,00
ZONE MANAGEMENT DELIVERY PLENUM 38 DC INVERTER	cod. 63000061	3 x 200 mm	1186 X 175 mm	1.760,00
ZONE MANAGEMENT DELIVERY PLENUM 50 DC INVERTER	cod. 63000062	4 x 200 mm	1044 X 227 mm	1.900,00
ZONE MANAGEMENT DELIVERY PLENUM 60 DC INVERTER	cod. 63000063	4 x 200 mm	1044 X 227 mm	1.900,00

RETURN GRID

Return grille in PVC profile complete with frame and magnet filter



PVC PROFILE RETURN GRILLE COMPLETE WITH FRAME AND MAGNET FILTER

		€
GRILLE 600 x 300 mm	cod. 63000064	200,00
GRILLE 800 x 600 mm	cod. 63000065	220,00
GRILLE 800 x 400 mm	cod. 63000066	280,00

COMMERCIAL LINE - DUCTABLE ACCESSORIES DC INVERTER

Split system air conditioners



	€
Multifunction wired remote control with follow me function, internal receiver and addressing	cod. 63000071
	160,00



	€
Wi-Fi control via smartphone or pad for R32 commercial series indoor units. App suitable for Android and iOS systems with all basic functions. Senior function, weekly timer, personalized sleep curve and self-control.	cod. 63000012
	150,00



	€
TWIN system kit, conversion from commercial range into dual split air conditioner	cod. 63000072
	170,00



	€
FLEX PIPE IN INSULATED PVC for ducts of 10 m - Ø 200	cod. 37900001
	224,00



BRAGA to Y	0 2 0 0 0 05 05,	5
------------	------------------	---



DELIVERY PORT 40x20 cm with adjustable blades complete with damper	cod. 37900021	98,00
---	---------------	-------

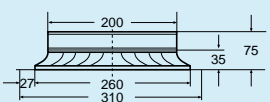


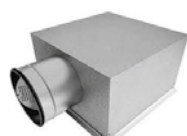
CONNECTION PLENUM Ø 200 40x20 cm between flex tube and delivery nozzle	cod. 37900019	100,00
---	---------------	--------

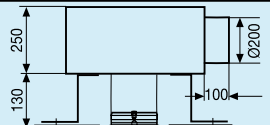


ANCHOR BRACKETS FOR OUTDOOR UNITS for mod. 9 - 12 complete with anti-vibration kit for mod. 18 - 20 - 25 - 38 - 50 - 60 complete with anti-vibration kit	cod. 37081060 cod. 37081061	78,00 114,00
--	--------------------------------	-----------------



CIRCULAR DIFFUSERS Ø 200 with millimetrically adjustable cones and butterfly calibration damper		cod. 37900027	100,00
---	--	---------------	--------



PLENUM CONNECTION Ø 200 between flexible tube and circular diffuser with adjustable cones		cod. 379000031	210,00
---	--	----------------	--------

Twin system: transforms the commercial range into a Dual air conditioner



TWIN SYSTEM:

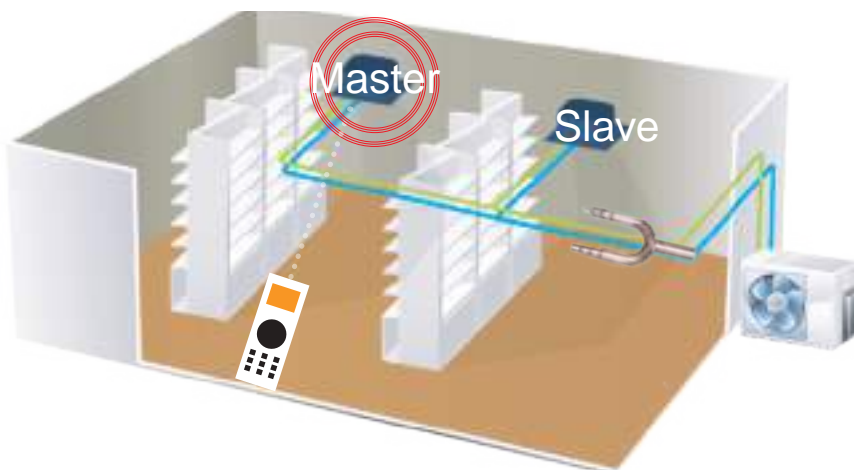
In the new Twin system, some outdoor units can be connected to two indoor units having the same capacity between them by means of a particular connection that can be purchased separately. Only the cassette, duct and ceiling-floor indoor units can be converted into a Twin system.

The control system allows operation of the two units

in perfect "tandem".

The secondary unit (slave) will operate in the same state as the main unit: working mode, set temperature, fan speed will be the same.

The power delivered by the two indoor units is bound by the power delivered by the associated outdoor unit. When the main unit stops, the slave unit will also stop.



Combinations	Indoor unit	Outdoor unit
	25+ 25	50
	38 + 38	60

Length pipes	Total length of pipes	25+25	65	L+MAX (L1, L2)
		38+38	65	
	Farthest distance from the branch of the line pipe		15	L1, L2
	Farthest distance from the branch of the line pipe		10	L1-L2
	Difference in height between indoor unit and outdoor unit		20	H1
Difference in altitude	Difference in height between two indoor units		0,5	H2

