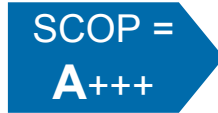
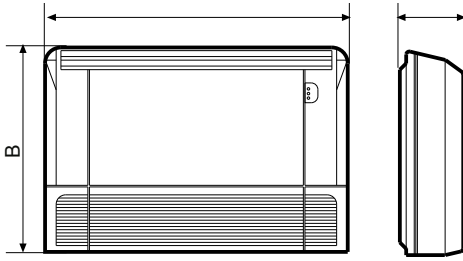


COMMERCIAL LINE CEILING / FLOOR DC INVERTER

Split system air conditioners

COMPATIBLE



	A	B	C	
	mm	mm	mm	kg
CEILING/FLOOR INVERTER 20	1068	675	235	28
CEILING/FLOOR INVERTER 25	1068	675	235	26,8
CEILING/FLOOR INVERTER 38M	1650	675	235	39

	A	B	C	
	mm	mm	mm	kg
CEILING/FLOOR INVERTER 38T	1650	675	235	39
CEILING/FLOOR INVERTER 50	1650	675	235	41,2
CEILING/FLOOR INVERTER 60	1650	675	235	41,4

MODEL	COOLING POWER kW	THERMAL POWER kW	€
CEILING/FLOOR 20 DC INVERTER U.I.	5,3 (0,7÷6,1)	5,4 (0,8÷7,0)	1.080,00
OUTDOOR UNIT 20 INVERTER U.E.			1.450,00
CEILING/FLOOR 25 DC INVERTER U.I.	7,0 (2,2÷8,2)	7,6 (2,4÷8,6)	1.120,00
OUTDOOR UNIT 25 DC INVERTER U.E.			1.840,00
CEILING/FLOOR 38M DC INVERTER U.I.	10,5 (2,6÷12,0)	11,1 (2,9÷13,1)	1.500,00
OUTDOOR UNIT 38M FASE DC INVERTER U.E.			3.200,00
CEILING/FLOOR 38T DC INVERTER U.I.			1.500,00
OUTDOOR UNIT 38T FASE DC INVERTER U.E.			3.120,00
CEILING/FLOOR 50 DC INVERTER U.I.	14,2 (4,9÷15,1)	16,1 (3,8÷18,0)	1.670,00
OUTDOOR UNIT 50 DC INVERTER U.E.			3.680,00
CEILING/FLOOR 60 DC INVERTER U.I.	16,0 (5,2÷17,0)	18,2 (4,4÷19,6)	1.900,00
OUTDOOR UNIT 60 DC INVERTER U.E.			4.240,00

TECHNICAL DATA	UM	CEIL/FLOOR 20	CEIL/FLOOR 25	CEIL/FLOOR 38M	CEIL/FLOOR 38T	CEIL/FLOOR 50	CEIL/FLOOR 60
Cooling power	kW	5,3 (2,7÷5,6)	7,0 (2,2÷8,2)	10,5 (2,6÷12,0)	10,5 (2,6÷12,0)	14,2 (4,9÷15,1)	16,0 (5,2÷17,0)
Absorbed power	kW	1,6*	2,1*	3,7*	3,7	5,5	6,0
Current consumption	A	7,2*	9,5*	16,3*	7,2	9,1	10,5
S.E.E.R.		6,10 A++	6,10 A++	6,10 A++	6,10 A++	6,10 A++	6,10 A++
Thermal power	kW	5,6 (2,4÷6,3)	7,6 (2,4÷8,6)	11,1 (2,9÷13,1)	11,1 (2,9÷13,1)	16,1 (3,8÷18,0)	18,2 (4,4÷19,6)
Absorbed power	kW	1,5*	2,0*	2,9*	2,9	5,0	6,0
Current consumption	A	6,6*	8,9*	12,9*	5,5	8,1	9,9
S.C.O.P. Mid-range		4,0 A+	4,0 A+	4,0 A+	4,0 A+	4,0 A+	4,0 A+
S.C.O.P. Warm-range		5,1 A+++	5,1 A+++	5,1 A+++	5,1 A+++	5,1 A+++	5,1 A+++
Supply		230V/1/50Hz	230V/1/50Hz	230V/1/50Hz	380V/3+N/50Hz	380V/3+N/50Hz	380V/3+N/50Hz
Air flow	m ³ /h	880/760/650	1208/1066/853	2160/1844/1431	2160/1844/1431	2329/1930/1417	2454/1834/1426
Sound level U. I.	dB (A)	41,5/38,5/34,5	50/46/41	51/47/42	51/47/42	54/50/46	54/47/42
Length Piping	m	≤ 30	≤ 50	≤ 65	≤ 65	≤ 65	≤ 65
Dislevel units	m	≤ 20	≤ 25	≤ 30	≤ 30	≤ 30	≤ 30
Gas connections		1/2"	5/8"	5/8"	5/8"	5/8"	5/8"
Liquid connections		1/4"	3/8"	3/8"	3/8"	3/8"	3/8"

*Value referred to the sum of the external unit + indoor unit absorptions (separate power supplies)

Cooling test conditions: int. 27 ° C d.b. / 19,5 ° C wb. - Ext. 35 ° C d.b. / 24 ° C wb.

Heating test conditions: int. 20 ° C db. - Ext. 7 ° C db. / 6 ° C wb.

COMMERCIAL LINE - DUCTABLE ACCESSORIES DC INVERTER

Split system air conditioners



	€
Multifunction wired remote control with follow me function, internal receiver and addressing	cod. 63000071 160,00



	€
Wi-Fi control via smartphone or pad for R32 commercial series indoor units. App suitable for Android and iOS systems with all basic functions. Senior function, weekly timer, personalized sleep curve and self-control.	cod. 63000012 150,00



	€
TWIN system kit, conversion from commercial range into dual split air conditioner	cod. 63000072 170,00



	€
FLEX PIPE IN INSULATED PVC for ducts of 10 m - Ø 200	cod. 37900001 224,00



BRAGA to Y	0 2 0 0 0 05 05, 5
------------	--------------------



DELIVERY PORT 40x20 cm with adjustable blades complete with damper	cod. 37900021 98,00
---	---------------------

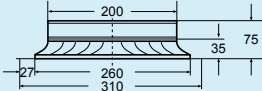


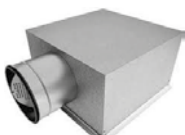
CONNECTION PLENUM Ø 200 40x20 cm between flex tube and delivery nozzle	cod. 37900019 100,00
---	----------------------

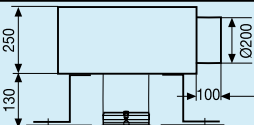


ANCHOR BRACKETS FOR OUTDOOR UNITS for mod. 9 - 12 complete with anti-vibration kit for mod. 18 - 20 - 25 - 38 - 50 - 60 complete with anti-vibration kit	cod. 37081060 78,00 cod. 37081061 114,00
--	---



CIRCULAR DIFFUSERS Ø 200 with millimetrically adjustable cones and butterfly calibration damper		cod. 37900027 100,00
---	--	----------------------



PLENUM CONNECTION Ø 200 between flexible tube and circular diffuser with adjustable cones		cod. 379000031 210,00
---	--	-----------------------