

# SXL 160 - 220 - 300 - 400 - 600 - 800

Gas storage water heater with sealed chamber for domestic and industrial use



## Technical and construction characteristics

The new SXL 160 - 220 - 300 - 400 - 600 - 800 range has been designed in compliance with the new ErP 2018 low NOx regulation. SXL is a water heater for the production of domestic hot water with accumulations from 160 to 800 liters depending on the model. The function of these devices is to generate domestic hot water through the heat exchange between the combustion products of the burner and the water present in the storage tank. Combustion occurs in a completely sealed manner with respect to the environment containing the appliance, taking in the air necessary for combustion from the outside and discharging the products of combustion itself outside. The sealed combustion chamber is located in the lower part of the appliance.

### BOILER

It is built with sturdy sheet metal and guarantees considerable resistance to pressure. It is also internally subjected to a glass-porcelain treatment. To allow inspection of the internal part and cleaning, a Ø120 mm flange is provided.

### COMBUSTION CHAMBER

It is located in the lower part of the appliance and contains: burner, manifold, injectors. The chamber is watertight compared to the environment in which the appliance is installed.

### SMOKE EXTRACTION CAP

A fan located in the upper shell provides both the air supply and the evacuation of combustion products. The shell can be rotated 360°. In the event of abnormal operation of the fan or obstruction of the ducts, a pressure switch interrupts the flow of gas to the burner.

**SMOKE EXHAUST KIT** (mandatory to install the kit supplied by the appliance manufacturer)  
To be chosen from those provided based on installation needs. It allows the connection of the combustion chamber to the outside (combustion air entry to the burner and fume expulsion).

### INSTRUMENT PANEL

It contains everything needed to control and regulate the normal operation of the appliance: regulation thermostat, on switch, illuminated release button, operating indicator light, thermometer.

### MAGNESIUM ANODE

To protect the device from galvanic currents that can corrode the inside of the device, two magnesium anodes are installed as standard, one in the inspection flange and one in the upper part of the device.



ERP  
READY



LOW  
NOx EMISSIONS



WATER HEATER  
GAS



USE  
INDUSTRIAL



HOT WATER  
HEALTH

Model	Thermal input kW	Thermal power kW	Code	€
<b>SXL 160</b>	<b>13,00</b>	<b>12,00</b>	<b>37301013</b>	<b>4.480,00</b>
<b>SXL 220</b>	<b>22,00</b>	<b>20,00</b>	<b>37301102</b>	<b>5.320,00</b>
<b>SXL 300</b>	<b>23,00</b>	<b>20,70</b>	<b>37301103</b>	<b>6.020,00</b>
<b>SXL 400</b>	<b>23,00</b>	<b>21,60</b>	<b>37301104</b>	<b>6.770,00</b>
<b>SXL 600</b>	<b>23,00</b>	<b>21,20</b>	<b>37301105</b>	<b>8.290,00</b>
<b>SXL 800</b>	<b>23,00</b>	<b>21,40</b>	<b>37301106</b>	<b>9.930,00</b>

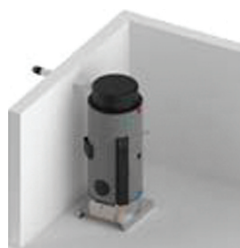
# SXL 160 - 220 - 300 - 400 - 600 - 800

Gas storage water heater with sealed chamber for domestic and industrial use

## Accessories SXL 160 - 220 - 300 - 400 - 600 - 800

Code

€



### C<sub>12</sub> horizontal coaxial exhaust kit

Intake/exhaust grille	1 pz
Spring Ø 60 / 100	1 pz
Rose window Ø 100	2 pz
Tube Ø 100 x 640 M / M	1 pz
Tube Ø 60 x 700 M / M	1 pz

37301017

150,00



### C<sub>42</sub> - C<sub>82</sub> horizontal split exhaust kit

Separate duct Ø 80	1 pz
Diaphragm Ø 45	1 pz
Diaphragm Ø 47	1 pz
Diaphragm Ø 52	1 pz
Flange Ø 60 - Ø 130	1 pz
Gasket Ø 80 x 9,5	1 pz
Reduction Ø 80 F / Ø 60 M	1 pz
Rose window Ø 80	2 pz
Terminal Ø 80	2 pz
Tube Ø 80 x 1000 M / M	2 pz

37301018

220,00



### Vertical coaxial drain kit (Ø 60/100) C<sub>32</sub>

Curve Ø 60 / 100 M / F	1 pz
Gasket Ø 100 x 9,5	1 pz
Gasket Ø 60 x 9,5	1 pz
Roof terminal Ø 60 / 100	1 pz

37301019

300,00



LPG operation conversion kit

mod. 160  
mod. 220 - 800

37301049  
37301050

32,00  
40,00



M/F coaxial extension with socket Ø 60/100 - L 1000 mm

37301040

74,00



M/F coaxial extension with socket Ø 60/100 - L 500 mm

37301041

60,00



M/F coaxial curve with socket Ø 60/100 - 45°

37301042

56,00



M/F coaxial curve with socket Ø 60/100 - 90°

37301043

60,00



M/F curve with glass Ø 80 - 45°

37301044

44,00



M/F curve with glass Ø 80 - 90°

37301045

44,00



Extension with glass Ø 80 - L 250 mm

37301046

38,00



Extension with glass Ø 80 - L 500 mm

37301047

44,00



Extension with glass Ø 80 - L 1000 mm

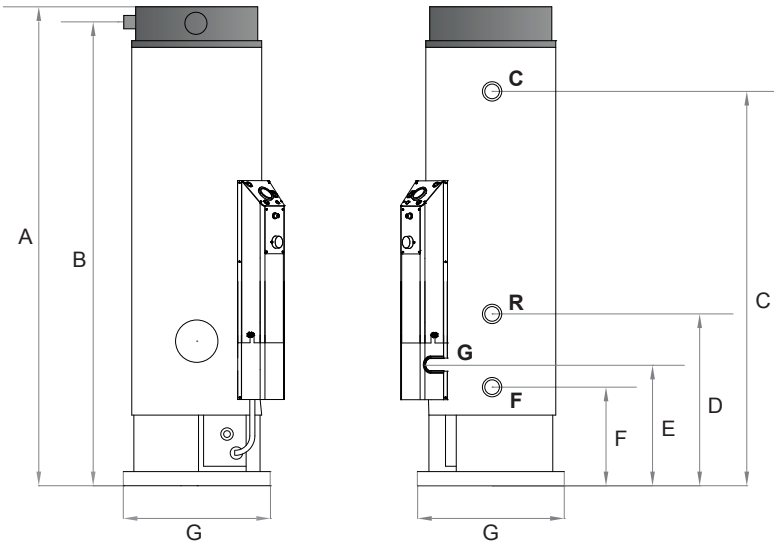
37301048

56,00

# SXL 160 - 220 - 300 - 400 - 600 - 800

Gas storage water heater with sealed chamber for domestic and industrial use

## Dimensions and dimensions SXL 160

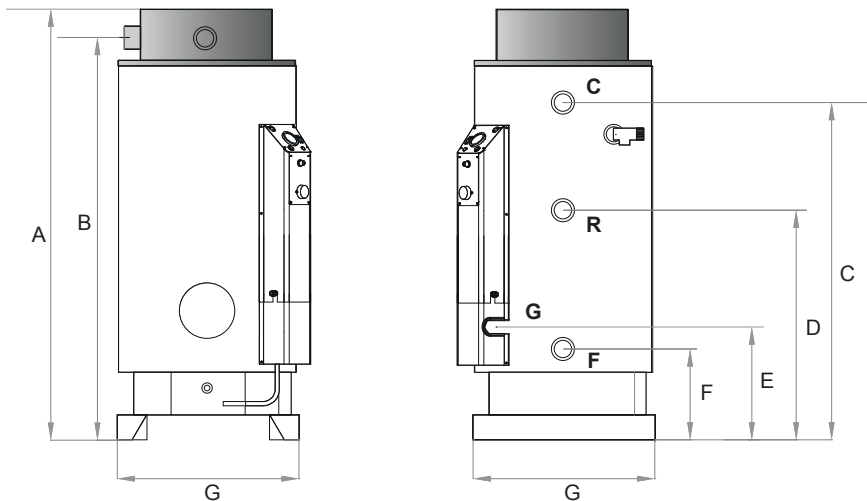


	SXL 160
A	2005
B	1890
C	1725
D	720
E	415
F	395
G	520

Values expressed in mm

**C** 3/4" hot water outlet  
**R** 3/4" recirculation  
**F** 3/4" cold water inlet  
**G** 1/2" gas inlet

## Dimensions and dimensions SXL 220 - 300 - 400

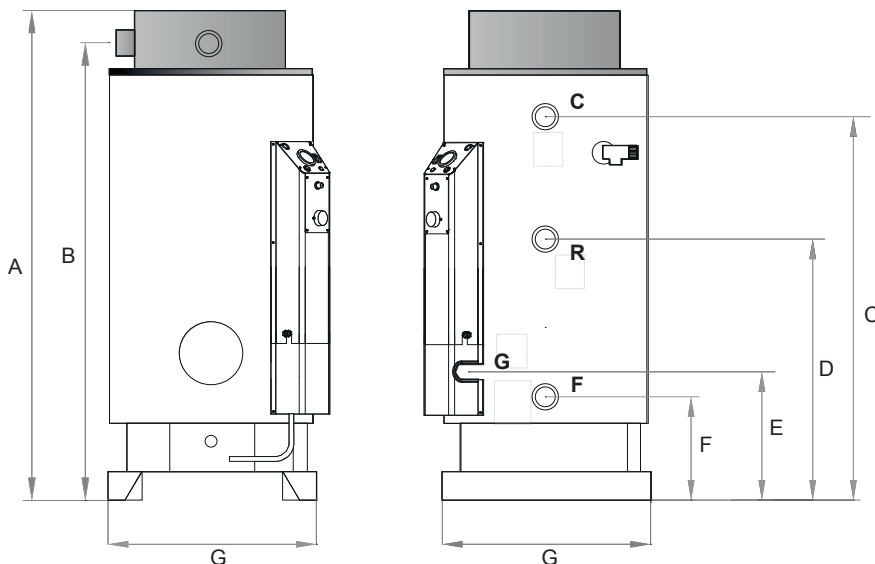


	SXL 220	SXL 300	SXL 400
A	1560	1912	2275
B	1445	1795	2145
C	1285	1640	1985
D	960	960	1135
E	475	475	475
F	405	405	403
G	720	720	720

Values expressed in mm

**C** 1" 1/4 hot water outlet  
**R** 1" 1/4 recirculation  
**F** 1" 1/4 cold water inlet  
**G** 1/2" gas inlet

## Dimensions and dimensions SXL 600 - 800



	SXL 600	SXL 800
A	1950	2310
B	1830	2195
C	1655	2030
D	950	950
E	475	475
F	410	410
G	920	920

Values expressed in mm

**C** 1" 1/4 hot water outlet  
**R** 1" 1/4 recirculation  
**F** 1" 1/4 cold water inlet  
**G** 1/2" gas inlet

# SXL 160 - 220 - 300 - 400 - 600 - 800

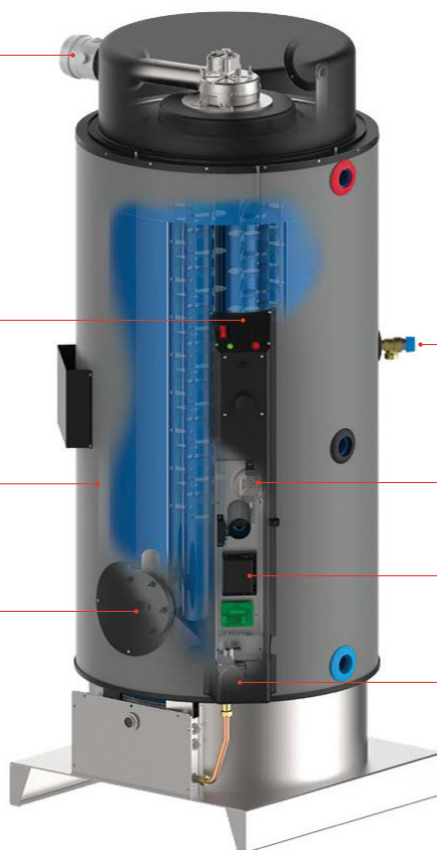
Gas storage water heater with sealed chamber for domestic and industrial use

Smoke extraction cap

Instrument panel  
(thermometer, water  
regulation thermostat,  
water temperature  
safety thermostat)

Original sheet metal tank  
choice (thickness 2.5 and 4  
mm) with internal treatment  
of double enamelling

Inspection and cleaning flange  
calcium and magnesium  
anode for corrosion protection



Safety valve  
from overpressure  
fitted as standard

Pressure switch  
smoke safety

Flame control

Gas valve

## Technical data table of domestic hot water generators SXL 160 - 220 - 300 - 400 - 600 - 800

Description	U.M.	SXL 160	SXL 220	SXL 300	SXL 400	SXL 600	SXL 800
Thermal flow	kW	13,0	22,0	23,0	23,0	23,0	23,0
Thermal power	kW	12,0	20,0	20,7	21,6	21,2	21,4
Yield	%	93	91	90	94	92	93
Capacity	l	160	220	300	400	585	740
Gas consumption (G20 - methane)	m <sup>3</sup> /h	1,4	2,3	2,4			
Gas consumption (G31 - propane)	Kg/h	1,0	1,7	1,8			
Nitrogen oxide (NOx)	ppm	31	28	28	17	13	16
Nitrogen oxide (NOx)	mg/kWh	55	50		30	24	28
Sanitary efficiency class		B					
Health profile		XXL					
Sound level	dB(A)	51					
Continuous sampling - ΔT = 25 °C*	l/h	420	690	710	740	730	740
Continuous sampling - ΔT = 50 °C*	l/h	210	340	360	370	360	370
Heating time - ΔT = 25 °C*	min	22	19	25	32	48	60
Heating time - ΔT = 50 °C*	min	45	38	51	65	96	121
Single sampling - ΔT = 25 °C*	l	372	528	720	960	1404	1776
Single sampling - ΔT = 50 °C*	l	186	264	360	480	702	888
Power supply		230V/1/50Hz					
Max water pressure	kPa (bar)	600 (6)					
Empty weight	Kg	120	175	208	245	248	303
Full weight	Kg	280	395	508	645	833	1043

(\* Storage temperature 70 °C - Domestic cold water inlet temperature 10 °C