

GHIBLI 4 - 5 - 6 ELITE

Gas radiator with sealed chamber and forced draft



Technical and construction characteristics

The covering of the GHIBLI Elite is made of steel sheet painted with epoxy powders, with lateral sides in heat-resistant nylon.

The two grills for the intake and delivery of the air are located respectively in the lower area and in the upper area of the casing.

On the front of the appliance is the control panel, which includes:

- the on/off switch
- the convection fan speed switch (models 5 and 6)
- the release button of the command and control equipment of the burner
- the LEDs indicating the blocking status (red) and heat request (green)
- the room thermostat adjustment knob

On the back you will find:

- the connection for the combustion air inlet duct and evacuation of combustion products
- the holes for fixing the appliance to the wall

Inside the appliance you will find:

- the combustion chamber and the finned heat exchanger with the fume extraction fan placed downstream of the circuit;
- the atmospheric burner with axial flame development complete with ignition and flame detection electrode;
- the convection fan is of the tangential type in the model GHIBLI 4 Elite and then centrifugal type with double impeller and central engine in Ghibli 5 and 6 Elite models;
- the fan control and safety thermostat;
- the electrical panel including the control equipment of the burner, the gas group and the room thermostat.



MAXIMUM
COMFORT
THERMAL



CIRCUIT
OF COMBUSTION
POND RESPECT
TO THE ENVIRONMENT



BURNER
PATENTED



VENTILATION
SILENT



DIMENSIONS
COMPACT



INSTALLATION
FACILITATED



ERP
READY








MADE
IN ITALY

THE SUPPLY INCLUDES:

LPG conversion kit, intake/exhaust hose length. 45 cm, dehumidification tray, exhaust terminal, gas tap.

Model	Thermal Inpu kW	Power Thermal kW	Code	€
GHIBLI 4 ELITE electronic	3,72	3,35	35630000	1.220,00
GHIBLI 5 ELITE 2-speed electronic	4,83	4,37	35680000	1.360,00
GHIBLI 6 ELITE 2-speed electronic	5,52	4,91	35730000	1.490,00

accessories GHIBLI 4 - 5 - 6 - ELITE

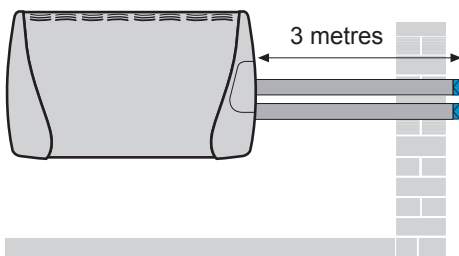
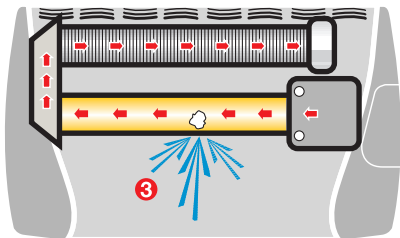
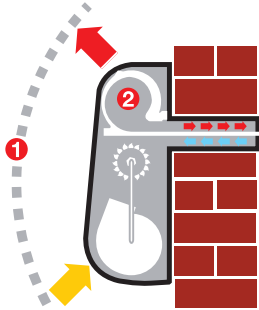
	Single-pipe intake and exhaust duct in aluminum with flange Ø 65 mm length 100 cm		35550060	60,00
	Digital weekly programmer clock kit for Ghibli 4-5-6 Elite including everything needed for its assembly plus the necessary instructions		35639900	110,00
	Aluminum tube Ø 60 mm	m 0,5	37500045	20,00
		m 1	37500050	30,00
	Complete 90° bend Ø 60 mm of clamp and gasket		37800020	40,00
	Splitter complete with two terminals for Ø 60 mm pipes		35600070	170,00

GHIBLI 4 - 5 - 6 ELITE

Gas radiator with sealed chamber and forced draft

Advantages of the GHIBLI 4 - 5 - 6 ELITE

The GHIBLI ELITE gas radiator is ideal for heating or integrating room heating even for occasional use in buildings to be renovated and holiday homes.



ELITE IN SAFETY

The special steel combustion chamber is completely sealed and under depression, with the fan placed downstream of the combustion circuit, to make the appliance extremely safe.

- 1) Combustion circuit sealed from the environment
- 2) Circuit in depression with respect to the environment
- 3) The combustion circuit of the appliance, thanks to the fume extraction fan located upstream, is located constantly depressed compared to the environment in which he is installed. In this way any deterioration of the circuit tightness (due exclusively to conditions operating anomalies) will never be able to cause release of unburned or toxic gases into the internal environment.

ELITE IN CONSTRUCTION

The nickel-plated exchanger is equipped with special fins to increase the efficiency of the heat exchange.

The particular design of the burner allows for a low value of polluting emissions of both CO and NOx.

The appropriately designed geometry of the casing allows for external contact temperatures (even accidental) in line with the most stringent regulations. The chamber built entirely in very thick steel with nickel plating treatment makes the Ghibli Elite gas radiator extremely resistant, long-lasting and pleasing to the eye. Thanks to the use of high air flow fans with a low number of revolutions, a comfortable air outlet temperature and good silence are obtained, without the risk of getting burned if you accidentally touch the external covering.

ELITE IN DIMENSIONS

The dimensions are the most compact of any product on the market.

The very low height allows for easy installation under a window.

SPLITTER

With the splitter it is possible to solve problems due to the positioning of the fume exhaust.

The intake and exhaust ducts are separated and can cover distances of up to 3 m each.

Using 90° bends it is possible to bring the ducts laterally.

For each curve it will be necessary to reduce the total length of the 3 m air duct by 50 cm.

Emission of hot air with low temperature differences

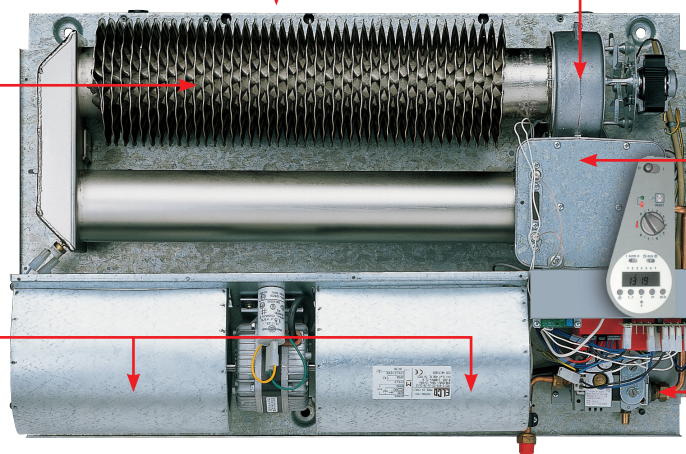
The only one to have the patented exchanger in finned steel with high thermal efficiency

The only one with the group centrifugal fan at double speed (only for mods. GHIBLI 5 - 6 ELITE)

Combustion circuit in depression respect for the environment thanks to the extractor smoke placed downstream

The only one to have the patented burner with low NOx axial flame development

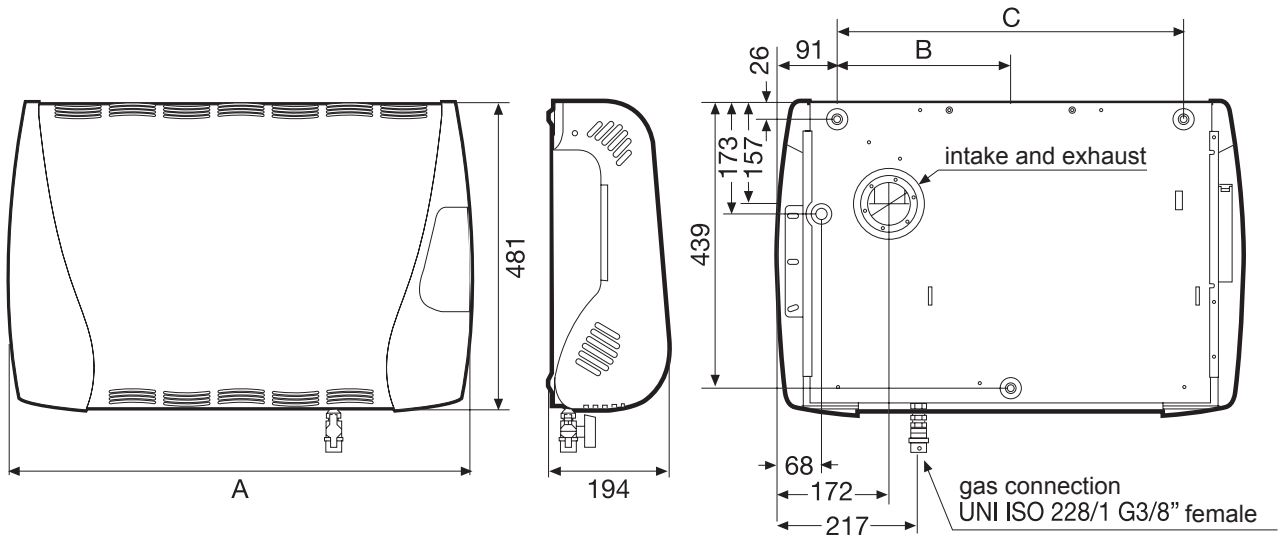
Control devices and electronic control



GHIBLI 4 - 5 - 6 ELITE

Gas radiator with sealed chamber and forced draft

GHIBLI 4-5-6 ELITE dimensions and dimensions



Values expressed in mm

Model	A	B	C	Intake/Exhaust	Gas
	mm	mm	mm	Ø mm	G
GHIBLI 4 ELITE	717	267	534	65	3/8"
GHIBLI 5 ELITE	807	366	624	65	3/8"
GHIBLI 6 ELITE	807	366	624	65	3/8"

Tabella dati tecnici radiatori a gas GHIBLI 4-5-6 ELITE

Description	U.M.	GHIBLI 4 ELITE	GHIBLI 5 ELITE	GHIBLI 6 ELITE	
Thermal power	kW	3,35	4,37	4,91	
Thermal flow	kW	3,72	4,83	5,52	
Yield	%	90,1	90,5	88,9	
Gas flow rate (15 °C - 1.013 mbar)	<i>Methane G20</i>	m ³ /h	0,39	0,51	0,58
	<i>Butane G30</i>	kg/h	0,29	0,38	0,44
	<i>Propane G31</i>	kg/h	0,29	0,37	0,43
Gas pressure to the burner (15 °C-1.013 mbar)	<i>G20 p 20 mbar</i>	mbar	11,5	11,5	11,5
	<i>G30 p 28-30 mbar</i>	mbar	27,8/29,8	27,7/29,8	27,7/29,8
	<i>G31 p 37 mbar</i>	mbar	36,5	36,5	36,5
Gas nozzle diameter	<i>G20</i>	mm/100	170	190	205
	<i>G30/G31</i>	mm/100	100	110	115
Fan air flow	<i>Min. speed</i>	m ³ /h	110	180	240
	<i>Max speed</i>	m ³ /h	-	240	300
Gas supply diameter		G 3/8"			
Feed diameter air/smoke exhaust	mm	65			
Fuse (fast type)	A	2			
Power supply		230V/1/50Hz			
Absorbed power	W	47	80	102	
Sound level at 3 m	dB(A)	29,0	29,5/31,5	31,5/33,5	
Weight	Kg	21	27	27	