

# Twin system: transforms the commercial range into a Dual air conditioner

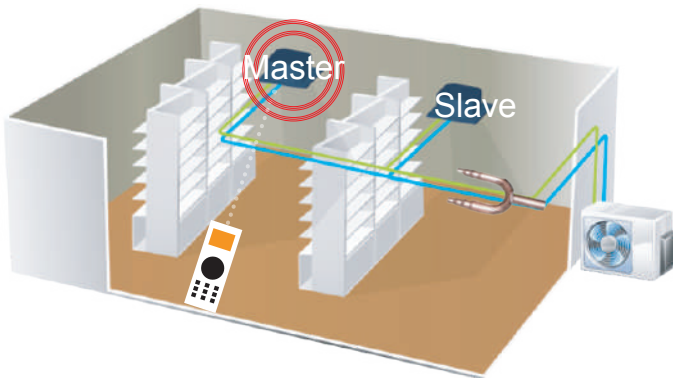


## TWIN SYSTEM:

In the new Twin system, some outdoor units can be connected to two indoor units having the same capacity between them by means of a particular connection that can be purchased separately. It is possible to transform into a Twin system only the indoor units of the cassette, duct type and floor ceiling type.

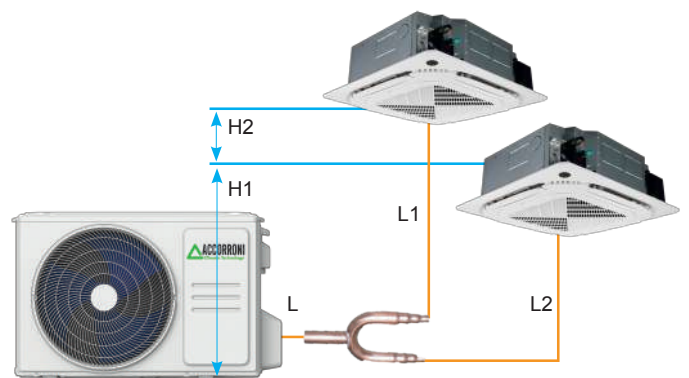
The control system allows operation of the two units

**in perfect "tandem". The secondary unit (slave) will work in the same state as the main unit: working mode, set temperature, fan speed will be the same. The power delivered by the two indoor units is bound by the power delivered by the associated outdoor unit. When the main unit stops, the slave unit will also stop.**



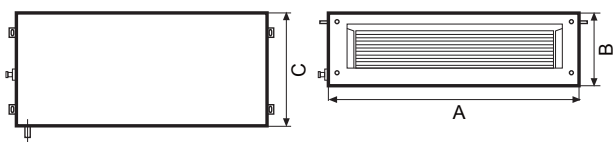
Combinations	Indoor units	Outdoor units
	25+ 25	50
	38 + 38	60

Piping length	Total piping length	25+25	65	L+MAX (L1, L2)
		38+38	65	
	Farthest distance from the branch of the line pipe		15	L1, L2
	Farthest distance from the branch of the line pipe		10	L1-L2
	Difference in height between indoor unit and outdoor unit		20	H1
Dislevel	Difference in height between two indoor units		0,5	H2

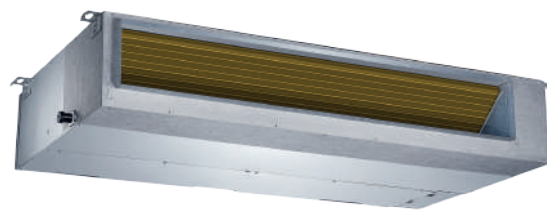


# COMMERCIAL LINE DUCTED DC INVERTER

## Split system air conditioners



SCOP =  
**A+++**



WIRED CONTROL, FILTER,  
CONDENSATE DRAIN PUMP

	A	B	C	
	mm	mm	mm	kg
DUCTED 12 INVERTER	700	200	506	17,8
DUCTED 20 INVERTER	880	210	674	24,4
DUCTED 25 INVERTER	1100	249	774	32,3
DUCTED 38M INVERTER	1360	249	774	40,5

	A	B	C	
	mm	mm	mm	kg
DUCTED 38T INVERTER	1360	249	774	40,5
DUCTED 50 INVERTER	1200	300	874	47,6
DUCTED 60 INVERTER	1200	300	874	47,6

MODEL		COOLING POWER kW	THERMAL POWER kW	€
DUCTED 12 DC INVERTER U.I.	cod. 63000039	3,51 (0,53÷5,8)	3,80 (1,0÷4,3)	924,00
OUTDOOR UNIT 12 DC INVERTER U.E.	cod. 63000016			1.092,00
DUCTED 20 DC INVERTER U.I.	cod. 63000041	5,27 (2,55÷5,8)	5,56 (2,2÷6,1)	1.156,00
OUTDOOR UNIT 20 DC INVERTER U.E.	cod. 63000018			1.520,00
DUCTED 25 DC INVERTER U.I.	cod. 63000043	7,03 (3,28÷8,16)	7,61 (2,81÷8,49)	1.181,00
OUTDOOR UNIT 25 DC INVERTER U.E.	cod. 63000020			1.930,00
DUCTED 38M FASE DC INVERTER U.I.	cod. 63000045	9,90 (2,75÷11,14)	11,72 (2,78÷12,78)	1.420,00
OUTDOOR UNIT 38M FASE DC INVERTER U.E.	cod. 63000022			3.249,00
DUCTED 38T FASE DC INVERTER U.I.	cod. 63000045	9,97 (2,75÷11,14)	11,24 (2,78÷12,78)	1.420,00
OUTDOOR UNIT 38T FASE DC INVERTER U.E.	cod. 63000023			3.302,00
DUCTED 50 DC INVERTER U.I.	cod. 63000048	12,70 (2,93÷12,31)	15,02 (3,37÷14,07)	1.624,00
OUTDOOR UNIT 50 DC INVERTER U.E.	cod. 63000025			3.876,00
DUCTED 60 DC INVERTER U.I.	cod. 63000050	15,24 (4,10÷17,29)	18,17 (4,40÷20,52)	1.860,00
OUTDOOR UNIT 60 DC INVERTER U.E.	cod. 63000027			4.374,00

TECHNICAL DATA		UM	DUCTED 12	DUCTED 20	DUCTED 25	DUCTED 38M	DUCTED 38M	DUCTED 50	DUCTED 60
Cooling power	kW		3,51 (0,53÷3,9)	5,27 (2,55÷5,8)	7,03 (3,28÷8,16)	9,90 (2,75÷11,14)	9,97 (2,75÷11,14)	12,70 (3,51÷15,53)	15,24 (4,10÷17,29)
Absorbed power	kW		1,0*	1,5*	2,19*	3,51*	3,04*	3,90*	5,25*
Current consumption	A		4,70*	7,10*	10,20*	17,50*	6,50*	8,40*	9,60*
S.E.E.R.			6,3 <b>A+++</b>	6,5 <b>A+++</b>	6,1 <b>A+++</b>	6,2 <b>A+++</b>	6,2 <b>A+++</b>	6,1 <b>A+++</b>	6,1 <b>A+++</b>
Thermal power	kW		3,80 (1,0÷4,3)	5,56 (2,2÷6,1)	7,61 (2,81÷8,49)	11,72 (2,78÷12,78)	11,24 (2,78÷12,78)	15,02 (4,10÷18,17)	18,17 (4,40÷20,52)
Potenza Assorbita	kW		1,00*	1,50*	1,90*	3,02*	2,87*	4,01*	5,15*
Absorbed power	A		4,50*	6,80*	9,20*	14,50*	5,30*	8,00*	9,50*
S.C.O.P. Mid-range			4,0 <b>A+</b>	4,0 <b>A+</b>	4,0 <b>A+</b>	4,0 <b>A+</b>	4,0 <b>A+</b>	4,0 <b>A+</b>	4,0 <b>A+</b>
S.C.O.P. Warm-range			5,1 <b>A+++</b>	5,1 <b>A+++</b>	5,1 <b>A+++</b>	5,1 <b>A+++</b>	5,1 <b>A+++</b>	5,1 <b>A+++</b>	5,1 <b>A+++</b>
Power supply			230V/1/50Hz	230V/1/50Hz	230V/1/50Hz	230V/1/50Hz	380V/3+N/50Hz	380V/3+N/50Hz	380V/3+N/50Hz
Air flow	m <sup>3</sup> /h		600/480/300	911/706,3/515,2	1129/1035/825,1	2100/1800/1500	2100/1800/1500	2400/2040/1680	2600/2210/1820
Prevalence	Pa		0 - 60	0 - 100	0 - 100	0 - 160	0 - 160	0 - 160	0 - 160
Sound level I.U.	dB (A)		34,5/30,5/29/23	41/38/34/26	42/40/37/27	49,5/48/46/42	49,5/48/46/42	51,5/49/48/43	52,5/49/47
Length Piping	m		≤ 20	≤ 30	≤ 50	≤ 75	≤ 75	≤ 75	≤ 75
Dislevel units	m		≤ 10	≤ 20	≤ 25	≤ 30	≤ 30	≤ 30	≤ 30
Gas connections			3/8"	1/2"	5/8"	5/8"	5/8"	5/8"	5/8"
Liquid connections			1/4"	1/4"	3/8"	3/8"	3/8"	3/8"	3/8"

Cooling test conditions: int. 27 ° C d.b. / 19.5 ° C wb. - Ext. 35 ° C d.b. / 24 ° C wb.  
Heating test conditions: int. 20 ° C db. - Ext. 7 ° C db. / 6 ° C wb.

# COMMERCIAL LINE DUCTABLE ACCESSORIES DC INVERTER

## Split system air conditioners

### DELIVERY PLENUM

Complete with circular connections made of PVC complete with external insulation and elastic sheath for joining the fan unit. The use of PVC ensures the best air quality combined with extreme lightness and long life.



DELIVERY PLENUM WITH CIRCULAR CONNECTIONS		N. COLLARS AND DIAMETER	DIMENSIONS	€
DELIVERY PLENUM12 DC INVERTER	cod. 63000052	2 x 160 mm	537 X 152 mm	279,00
DELIVERY PLENUM 20 DC INVERTER	cod. 63000053	2 x 200 mm	706 X 136 mm	383,00
DELIVERY PLENUM 25 DC INVERTER	cod. 63000054	3 x 160 mm	926 X 175 mm	389,00
DELIVERY PLENUM 38 DC INVERTER	cod. 63000055	3 x 200 mm	1186 X 175 mm	577,00
DELIVERY PLENUM 50 DC INVERTER	cod. 63000056	4 x 200 mm	1044 X 227 mm	614,00
DELIVERY PLENUM 60 DC INVERTER	cod. 63000057	4 x 200 mm	1044 X 227 mm	614,00

### DELIVERY PLENUM WITH ZONE MANAGEMENT

Complete with circular connections made of PVC, external insulation and elastic sheath for joining the fan unit. The use of PVC ensures the best air quality combined with extreme lightness and long life.

Equipped with a practical thermoregulation kit complete with motorized shutters already installed, advanced power module from 2 to 6 zones, 12V power supply, all wired. The regulation system of each zone can be controlled by a room thermostat already present, or, chosen from the many available on the market and is compatible with any model. The thermostat, through the connection to the regulation board, operates the regulation damper.

An automatic by-pass compensates for the back pressures generated by the closing of the control dampers.

When there is no need for heating / cooling, the system switches off the air conditioning unit.

On the contrary, as soon as any zone is activated by its thermostat, the system immediately activates the air conditioning unit.



DELIVERY PLENUM WITH ZONE MANAGEMENT WITH CIRCULAR CONNECTIONS		N. COLLARS AND DIAMETER	DIMENSIONS	€
ZONE MANAGEMENT DELIVERY PLENUM 12 DC INVERTER	cod. 63000058	2 x 160 mm	537 X 152 mm	1.452,00
ZONE MANAGEMENT DELIVERY PLENUM 20 DC INVERTER	cod. 63000059	2 x 200 mm	706 X 136 mm	1.581,00
ZONE MANAGEMENT DELIVERY PLENUM 25 DC INVERTER	cod. 63000060	3 x 160 mm	926 X 175 mm	1.785,00
ZONE MANAGEMENT DELIVERY PLENUM 38 DC INVERTER	cod. 63000061	3 x 200 mm	1186 X 175 mm	2,014,00
ZONE MANAGEMENT DELIVERY PLENUM 50 DC INVERTER	cod. 63000062	4 x 200 mm	1044 X 227 mm	2,177,00
ZONE MANAGEMENT DELIVERY PLENUM 60 DC INVERTER	cod. 63000063	4 x 200 mm	1044 X 227 mm	2,177,00

### RETURN GRID

Return grille in PVC profile complete with frame and magnet filter



PVC PROFILE RETURN GRILLE COMPLETE WITH FRAME AND MAGNET FILTER			€
GRILL 600 x 300 mm	cod. 63000064		231,00
GRILL 800 x 600 mm	cod. 63000065		253,00
GRILL 800 x 400 mm	cod. 63000066		317,00

# COMMERCIAL LINE - DUCTABLE ACCESSORIES DC INVERTER

## Split system air conditioners

€



Multifunction wired remote control with follow me function, internal receiver and addressing

cod. 63000071

168,00



Wi-Fi control via smartphone or pad for R32 commercial series indoor units. App suitable for Android and iOS systems with all basic functions. Senior function, weekly timer, personalized sleep curve and self-control.

cod. 63000012

164,00



TWIN system kit, conversion from commercial range into dual split air conditioner

cod. 63000072

194,00



FLEX PIPE IN INSULATED PVC for ducts of 10 m - Ø 200

cod. 37900001

208,00



BRAGA to Y

cod. 65500020

50,00



DELIVERY PORT 40x20 cm with adjustable blades complete with damper

cod. 37900021

98,00



CONNECTION PLENUM Ø 200 40x20 cm between flex tube and delivery nozzle

cod. 37900019

146,00



ANCHOR BRACKETS FOR OUTDOOR UNITS for mod. 9 - 12 complete with anti-vibration kit for mod. 18 - 20 - 25 - 38 - 50 - 60 complete with anti-vibration kit

cod. 37081060

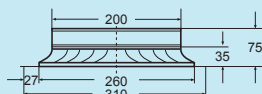
50,00

cod. 37081061

90,00



CIRCULAR DIFFUSERS Ø 200 with millimetrically adjustable cones and butterfly calibration damper

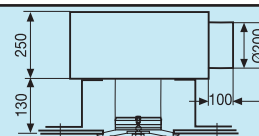


cod. 37900027

122,00



PLENUM CONNECTION Ø 200 between flexible tube and circular diffuser with adjustable cones



cod. 379000031

210,00